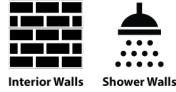
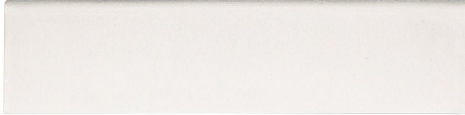


Chapter 17 - Atlas Single Bullnose 3" x 12"

Tile Application



Shading



Tile Specs

PART #	74305
PRODUCT NAME	Single Bullnose 3" x 12"
HEIGHT (IN)	3
WIDTH (IN)	12
UNIT OF MEASURE	each
COVERAGE PER PIECE (SQ FT)	0.25
MATERIAL(S)	Glazed-White Body Ceramic
FINISH	Gloss Crackle
THICKNESS (MM)	10
WEIGHT PER UOM (LBS)	0.96
CASE QUANTITY (UOM)	36
WEIGHT PER CASE (LBS)	35.28
SHADING	V2
PRODUCT TYPE	Trim
AVAILABLE COLLECTION(S)	Atlas

Please Note:

All product shots are artistic interpretations of actual product. Due to the nature of the printing process, we recommend obtaining physical samples of product for actual color representation.

© Jeffrey Court, Inc
620 Parkridge Avenue | Norco, CA 92860
P | 951.340.3383 | Info@jeffreycourt.com

Socialize with us:    

Explore: JeffreyCourt.com